

HCL Automation Power Suite

The bundle offering to automate more, better, smarter



Overview

The Automation Power Suite is the bundle offering comprising of HCL Workload Automation, HCL Clara and HCL HERO. With Automation Power Suite, customers can automate more, automate better and automate smarter to build an enterprise automation platform.

With HCL Workload Automation can orchestrate business-critical processes against business KPIs, from a centralized point of control across platforms (from mainframe to containers). Plus, they can build their own enterprise automation hub with Workload Automation and a bunch of integrations - available on the Automation Hub catalog - covering a wide spectrum of automation needs, from IT tasks to business processes.

HCL Clara is the Intelligent Virtual Assistant, enhancing Workload Automation customers' experience with natural language processing interactions and smart actions.

HCL HERO (HEalthcheck & Runbook Optimizer) is the IT Administrator's best friend that, leveraging Machine Learning & Big Data, assists the Administrators in optimizing Workload Automation's infrastructure.

Capabilities

HCL Workload Automation

Automate and de-risk

- Orchestrate any kind of unattended process
- Manage Millions of jobs per day
- 99.99% availability target

Single point of access and control

- Enjoy the advantages of a unified management platform for advance monitoring and recovery across all data centers

Governance and compliance

- Centralized point for regulation compliance
- Predicts impacts of failures on business deadlines with analytics and embedded "what if" analysis and machine learning-powered predictive capabilities

HCL Clara	HCL HERO
<p>HCL Clara makes Workload Automation even easier to use, by offering a conversational interface to scheduling users, access the company's automation knowledge base, providing recommendations and performing tasks for the end-users.</p> <ul style="list-style-type: none"> • Interactions in natural language • Easy and intuitive training modules • Intuitive conversation definition via UI • Voice recognition • Action script and external language support for integration • External Interface for third party integration • Robust AI/NLP based intent identification engine • Autonomous execution of tasks in asynchronous way • Push notification 	<p>HCL HERO effectively combines centralized application monitoring with Runbook automation, providing a solution dedicated to Workload Automation, that makes your infrastructure easy to control and hassle free. It helps:</p> <p>Monitor</p> <ul style="list-style-type: none"> • Monitor the health of multiple production and non-production environments simultaneously <p>Measure</p> <ul style="list-style-type: none"> • Provide dedicated performance indicators for Workload Automation, with predictive analysis and Runbook recommendation <p>Integrate</p> <ul style="list-style-type: none"> • Easily integrate a runbook library with customized monitors and KPIs <p>Recover</p> <ul style="list-style-type: none"> • Recommend and execute Runbooks correlated to specific issues identified on the components of your application server infrastructure

BUILD YOUR ENTERPRISE AUTOMATION HUB

Orchestrate the ecosystem around your business-critical processes and move your workflows to the next level, with cutting-edge integrations for your workload automation platform.

Search for out-of-the-box integrations from the Automation Hub catalog, submit your ideas or create your own integrations.

Benefits

HCL Workload Automation



A digital transformation booster

HCL Workload Automation helps you automate beyond the boundaries, supporting multiple platforms, providing an advanced integration with enterprise applications such as SAP (Workload Automation is HANA S/4 certified), Oracle, Salesforce, and more, as well as with cloud resources, database/ETL management and more. Simplify and standardize the connection and orchestration of workloads from and to business intelligence and data processing applications with 50+ out-of-the-box plugins available on the Automation Hub and 100+ supported technologies.



Lowest TCO on the market

Stop worrying about costs, start enjoying all of the Workload Automation features.

There are no hidden costs: you buy HCL Workload Automation we give you the whole suite of plugins to easily connect activities and resources from common ERPs, Clouds, Databases, APIs, plus an all-inclusive product license with advanced capabilities and multiplatform support.



Simplify and control complexity

HCL Workload Automations allows you to easily design the dynamic resolution of complex applications interdependencies in heterogeneous ecosystems. Schedulers and Operators love it for its flexibility and Executives feels safer with a robust long-time market leader technology that takes care of the organization business continuity.

HCL Clara

HCL Clara offers a human-like, personalized, round-the-clock experience to Workload Automation users, which will:

- Minimize the FAQ-type calls
- Speed up learning curve on new features
- Reduce common-issue repetitive incidents
- Promote best practices

Simple to Get Started

- Learn how to use various functions and work-arounds, and get your actions done on Workload Automation in simple conversations at your convenience with HCL Clara.

Manage How-To Questions

- Get me started with building my process (jobs, APIs..)
- How to use calendar or event-based scheduling
- Understand new features
- Semantic search in Product Documentation

Support Basics Scheduling Scenarios

- Submit a job or job stream, Re-run jobs, High risk critical jobs
- Check job status and push notification for job status changes
- Download job log

Troubleshoot Workload

- Why the job is not starting? Why it failed?
- Why the job stuck in ready/ hold state?
- Why the job is still running or is in abend?

HCL HERO

HCL HERO brings the benefits of Artificial Intelligence (AI) technology to customers.

By providing an automated, intelligent solution to monitor the health of your Workload Automation environments, HCL HERO frees up IT Administrator's time and reduces manual effort:

Out-of-the-box Monitors and Runbooks

- Eliminate the need to manually maintain custom monitor scripts
- Open platform to integrate predefined custom monitor scripts and Runbooks

Prediction on KPIs trends

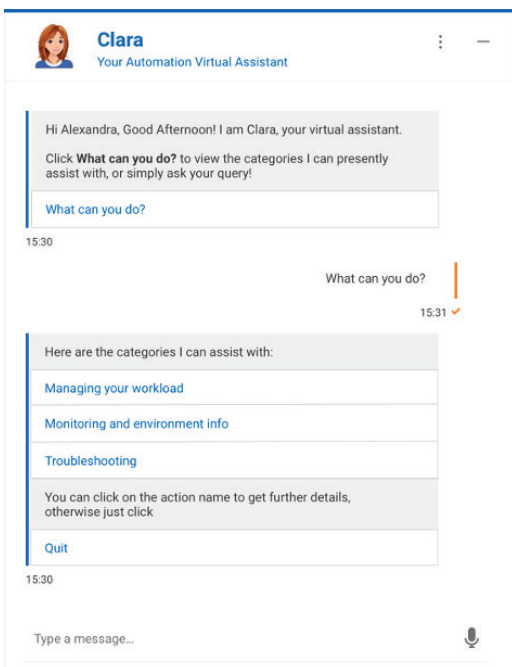
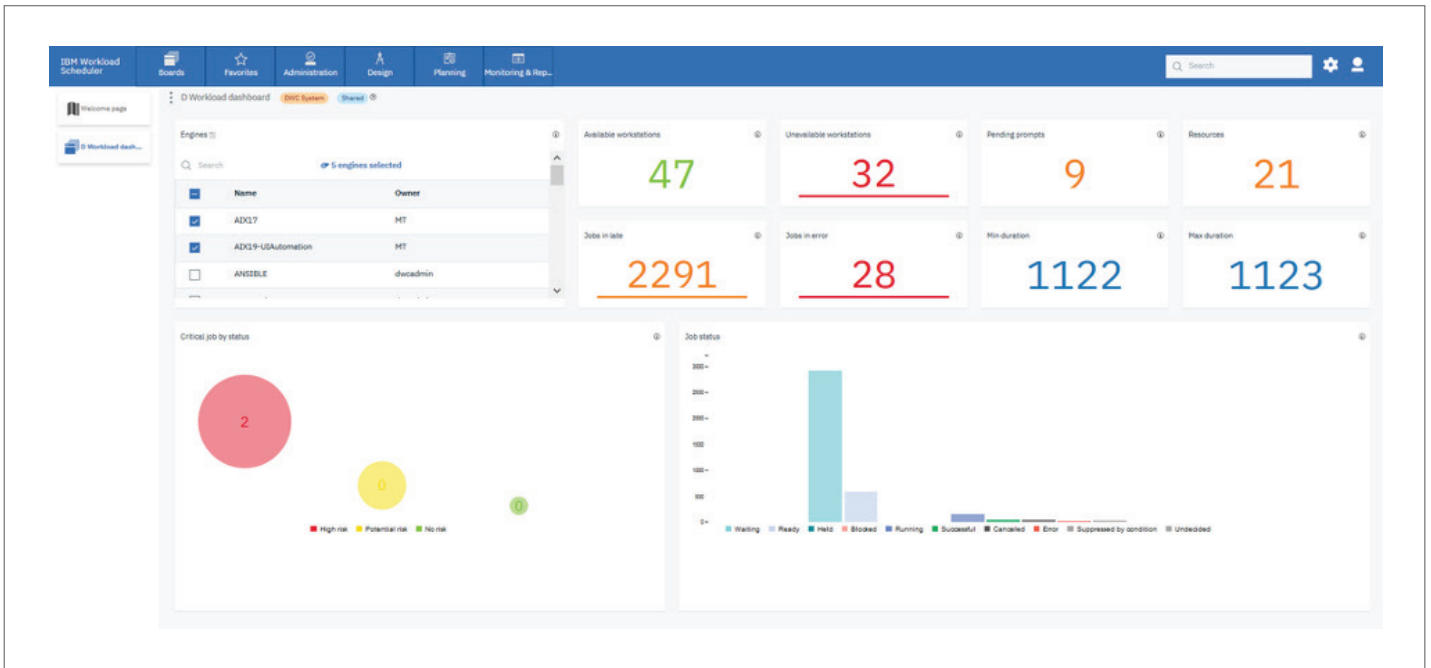
- Provide actual KPIs, such as throughput and queue monitoring
- Provide AI-powered trend estimation of KPIs to predict potential problems

Failure Prevention

- Provide intuitive dashboard with warnings and errors prioritization and email notifications
- Control internal queues exhaustion before system hangs

Achieve Optimum Performance

- Get insights on your infrastructure weaknesses
- Monitor critical agent availability
- Plan resources allocation



Make the most out of these solutions with the Automation Power Suite bundle and enjoy the advantages of a perpetual pricing model.

Automate more, better, smarter! Contact us at HWInfo@hcl.com.

For more information, visit our webpage [here](#), tune into the [Automation Series | Podcast](#), and read our latest technote [here](#).



About HCL Software

HCL Software is a division of HCL Technologies (HCL) that operates its primary software business. It develops, markets, sells, and supports over 20 product families in the areas of DevOps, Automation, Digital Solutions, Data Management, and Mainframes. HCL Software has offices and labs around the world to serve thousands of customers. Its mission is to drive ultimate customer success with their IT investments through relentless innovation of its products. For more information, please visit www.hcltechsw.com.